



## CASE STUDY

# INVESTMENT CASTING

Size: 5" x 6" x 1.5" | Alloy: Low alloy steel (4140)

\*Notes: This investment cast component replaces a 12-piece assembly.

## Pedal Casting

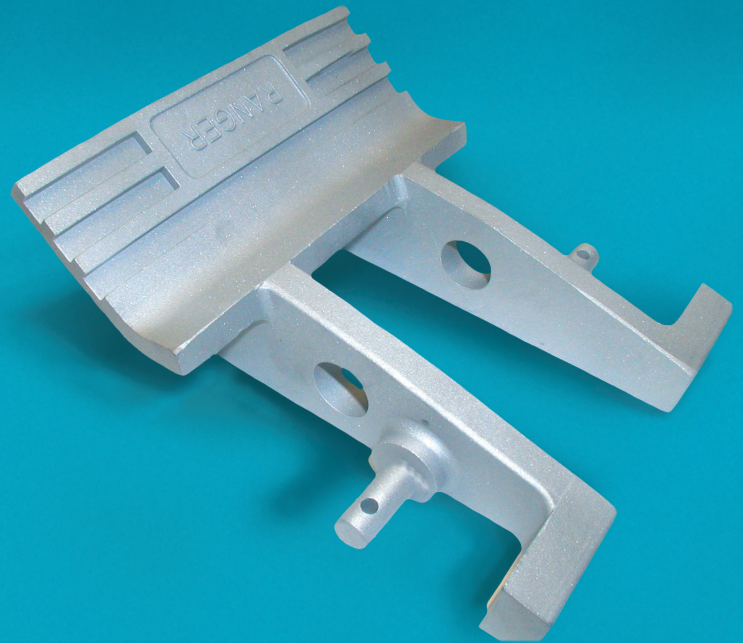
---

The pedal casting has helped to reduce the total assembly time from more than eight hours to less than one hour, thus improving the productivity at the customer's operation.

The customer has the added benefit of having its company name cast in the part and clearly displayed. The cast parts used in the assembly allow a smoother action and more reliable action.

The casting also incorporates a more reliable safety catch on the pedal that prevents the piping from lifting during a gas blowback. If the piping lifts, several hundred feet of piping can be lost down the hole.

The reduction in assembly time, elegant design and increase in safety have greatly exceeded the customer's expectations.



This new design has proven to the customer that Investment Casting is the only way to make this part.